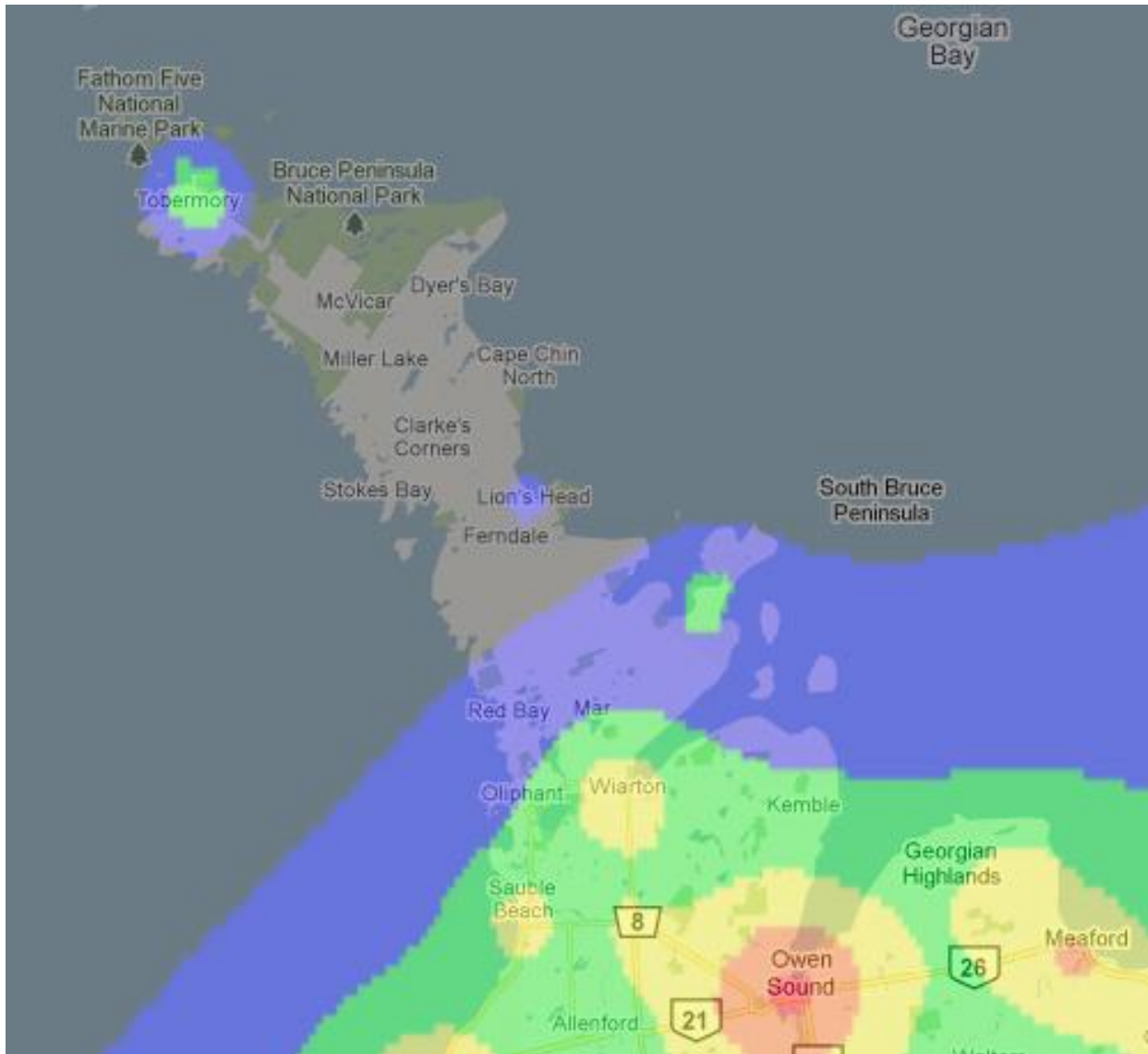


Light Pollution Map of the Bruce Peninsula



The Bruce Peninsula is one of the very last places in Southern Ontario that still has dark skies. Since 2004, Northern Bruce Peninsula as a municipality has been committed to the preservation of dark skies and in 2009 the Bruce Peninsula National Park & Fathom 5 National Marine Park were jointly designated a dark sky preserve by the Royal Astronomical Society of Canada. Each year astronomers are noticing that the light domes from urban areas to the south are slowly creeping upward and beginning to affect the quality of the Northern Bruce Peninsula skies.